

FACT SHEET

COURTLAND STREET ACCELERATED BRIDGE CONSTRUCTION PROJECT

PROJECT OVERVIEW

The Courtland Street Accelerated Bridge Construction (ABC) Project will replace all 28 spans of the Courtland Street Bridge over the Metropolitan Atlanta Rapid Transit Authority (MARTA) rail lines, CSX rail lines, and Decatur Street. The bridge replacement will occur on the location of the existing bridge and both vehicular traffic and pedestrian activity will be routed to offsite detours during demolition and construction. The project limits extend on Courtland Street from Martin Luther King Jr. Drive to Gilmer Street.

BENEFITS

SAFETY – The reconstructed bridge will be better suited to safely conduct increased traffic volumes and heavier vehicles.

ACCESSIBILITY - The new bridge will include a 12-foot lane so busses can better accommodate the on- and off-loading of passengers, and expanded sidewalks for pedestrian traffic.

ACCELERATED SCHEDULE – Through Design-Build innovation, GDOT has reduced the duration of the required road closure from 2 years, to 180 days to reduce impacts to both vehicular and pedestrian traffic.

QUICK FACTS

COST – The cost to construct the bridge is approximately \$25 million from federal, state, and local sources.

DESIGN AND CONSTRUCTION METHOD – The project will be built using some Design-Build Accelerated Bridge Construction methods.

GDOT DESIGN BUILD PROJECT PARTNER – The team of CW Matthews and Michael Baker International will design and build the bridge.

SCHEDULE



OUTREACH

GDOT is committed to a proactive emphasis on outreach on this project to ensure that affected stakeholders and general public are informed, educated and engaged throughout the course of the project.

GDOT CONTACTS

Project Email - courtland@cwmatthews.com

Project Phone Line (voicemail) – (678) 809-8219

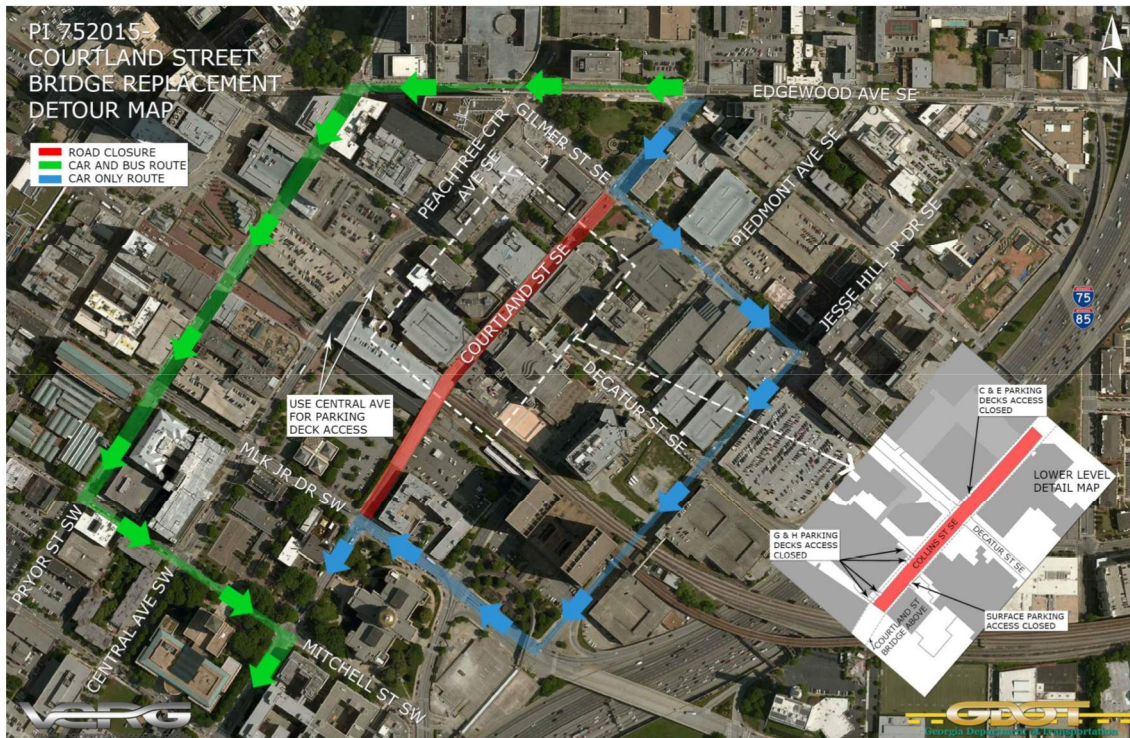
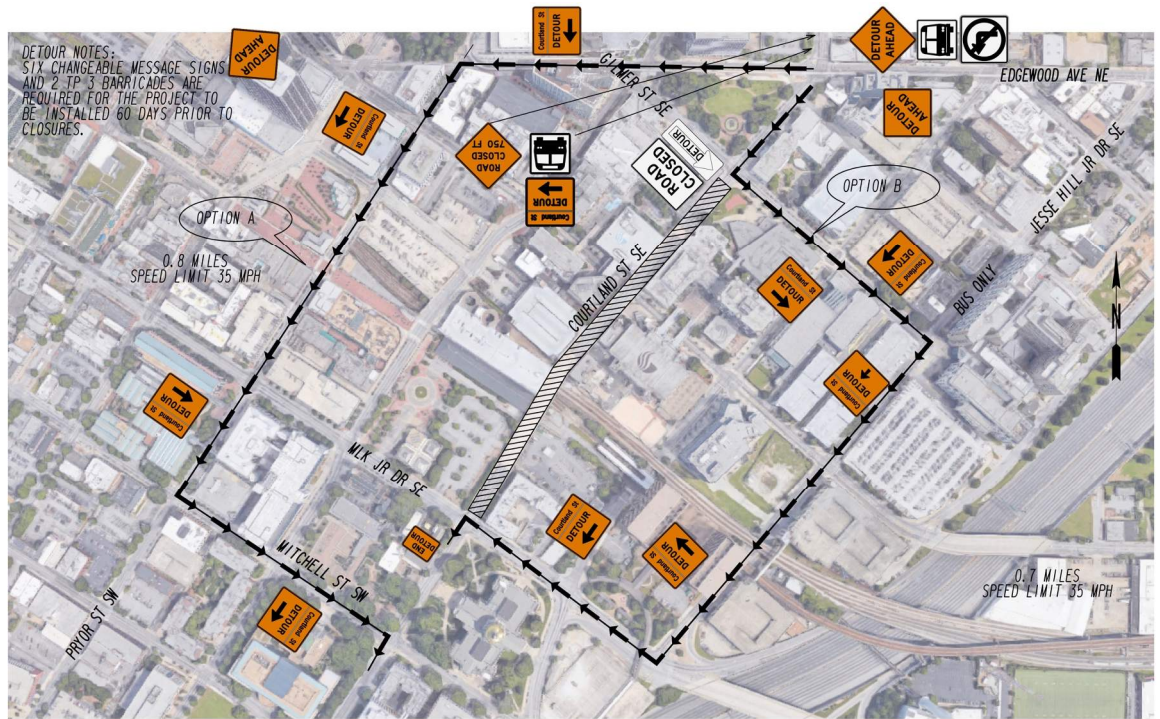
Project Manager Georgia DOT - Richard O'Hara, 404-631-1169

Communications – Jill Goldberg, jgoldberg@dot.ga.gov

TRAFFIC IMPACTS

Courtland Street Bridge will be closed to vehicular and pedestrian traffic from May – October 2018.

Pedestrians will be safely guided through protected pathways on Collins Street, while foot traffic on Courtland will be directed away from construction activity to offsite routes.



Vehicular and bus traffic will be routed to a signed offsite detour during demolition and construction.

Notice of construction activities will be posted to GDOT project webpage (www.dot.ga.gov/CourtlandSt) Social Media, and will be sent to media outlets and emergency responders.